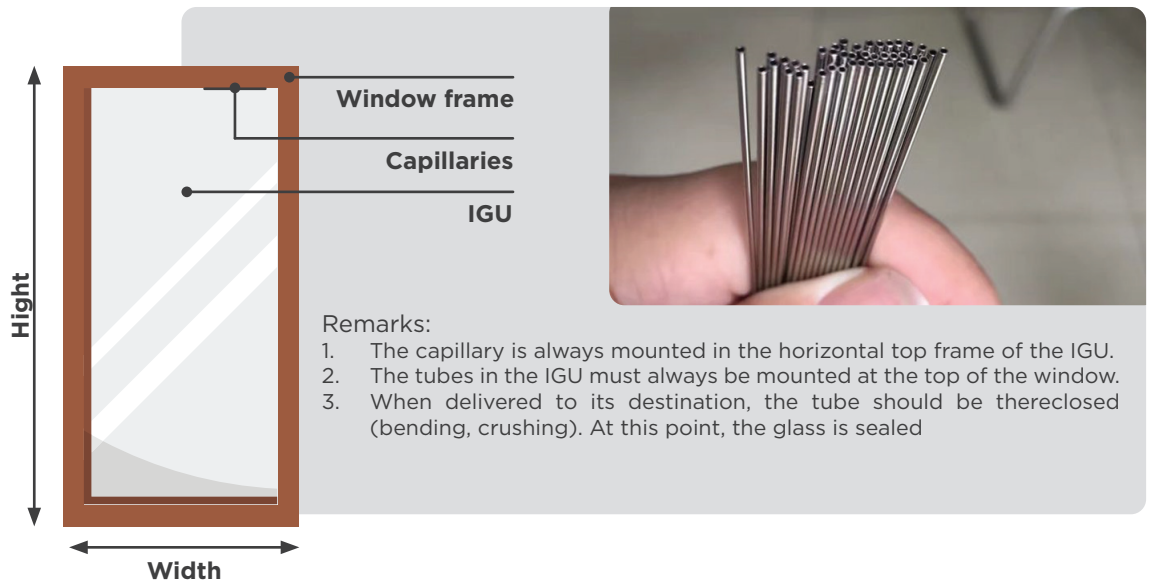


CAPILLARIES

In the case of using the so-called „capillaries”, i.e. an open system - allowing for natural pressure compensation in the insulating glass package, they are not covered by the warranty for tightness and gas content. The customer is obliged to secure / bend the capillaries after the assembly is delivered to the place of installation. The other terms of the guarantee remain unchanged. In order to reduce the risk of loss of tightness when using a capillary, the manufacturer suggests using the diagram below where a capillary is provided on the top edge of the IG unit.

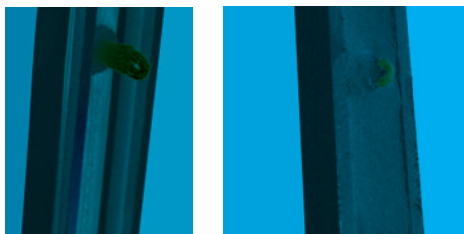


VALVES

Where there is limited information on the atmospheric conditions the air pressure can be equaliser using valves which can also be used when the method of transportation route has high or low altitude areas. The use of this method requires a written agreement with Glassolutions on the conditions of its implementation, in particular the place of installation.

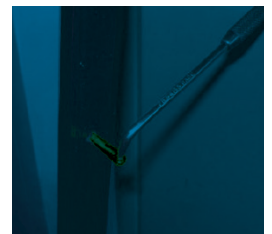
STEP 1

The valve is installed in Glassolutions



STEP 2

Valve pulled out during installation on site for pressure compensation (approx. 60 seconds)



STEP 3

Anastomosis sealing plug



STEP 4

Plug sealing

